

127'-6" REAR
98'-2"

WINDOW GLASS TO EQUAL 10%
OF FLOOR AREA

ROOF LINE

26 - 3'-9" FREE STALLS

FLOOR SLOPED DOWN
1/2 % TO WEST

4' TO 5' HIGH CONCRETE
FILLED 4" PIPE LOCATE
TO CLEAR DOORS 18"
FROM WALL.

18 - 3'-9" FREE STALLS

45' HAY STORAGE AND FEED RACK
PROVIDE DRAINS FOR WATERER
OVERFLOW AND CLEANING

DOOR SIZE OPTIONAL
SEE SHEET 3

SILAGE BUNK

6' x 8' POSTS

1/2" x 8" WINDBREAK GATE,
SPACED, DOUBLE SWUNG,
AND REMOVABLE.

FLOOR PLAN

NOTE: THIS AREA MAY BE PAVED
TO PERMIT SILAGE FEEDING
OF YOUNGSTOCK AND DRY
COWS.

NOTE # 1. LENGTH OF MILK ROOM AND UTILITY ROOM MAY BE
CHANGED WITHOUT MAJOR PLAN ALTERATIONS.

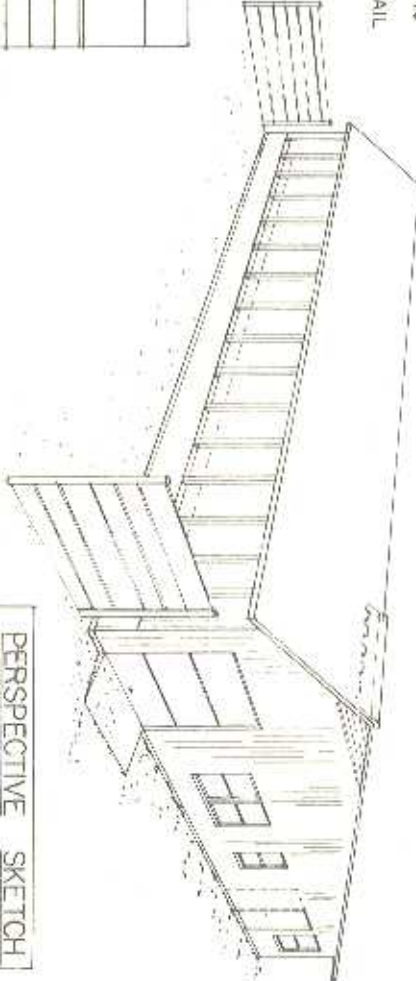
NOTE # 2. MILKING AREA IS SUFFICIENT IN SIZE SO AS TO BE
EASILY CONVERTED TO A FOUR STALL HERRING-
BONE PARLOR.

REFERENCES

- NORTHEAST DAIRY PRACTICES COUNCIL GUIDELINES
- BULLETIN # 1
FREE STALL HOUSING SYSTEMS
- BULLETIN # 6
BULK TANK MILKROOMS

NOTE: 3. PLAN FOR MANURE HANDLING
FROM THIS AREA
SEE PLAN #5977 FOR MANURE LIP DETAIL
SEE NORTHEAST DAIRY PRACTICES
COUNCIL GUIDELINES

LENGTH OF BARN	NUMBER OF FREE STALLS WITH 45' HAY FEEDER	WITHOUT FEEDER
127'-6"	48 OR SHOWN	60
131'-3"	51	63
135'-0"	54	66
138'-9"	57	69
143'-6"	60	72
147'-3"	63	75
150'-0"	66	78



PERSPECTIVE SKETCH
NO SCALE

NOTE:
CONSULT LOCAL HEALTH AND BUILDING CODE
AUTHORITIES BEFORE STARTING CONSTRUCTION

BASED ON: UNIV. OF MAINE PLAN 37301

COOPERATIVE EXTENSION WORK IN
AGRICULTURE AND HOME ECONOMICS

DAIRY BARN
ECONOMICAL FREESTALL

MAINE 75 6196 SHEET 1 OF 3

UNION STATES DEPARTMENT OF AGRICULTURE COOPERATING
AND